

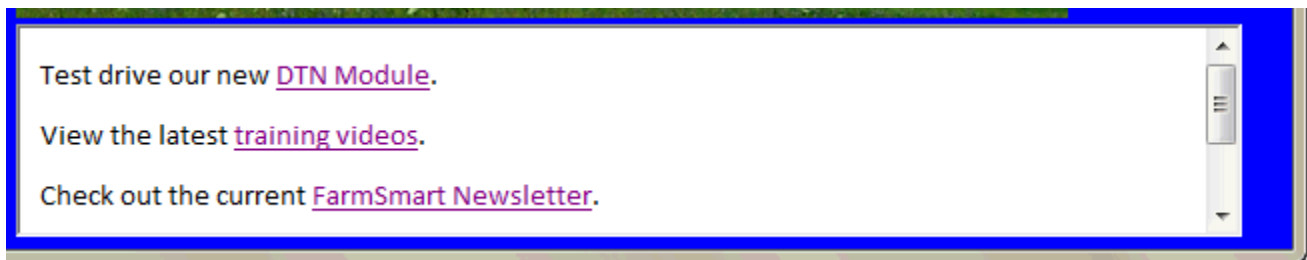
- ▶ [Common Definitions](#)
- ▶ [TransAction Plus](#)
- ▶ [LifeCycle™ Budget](#)
- ▶ [Crop Audit](#)
- ▶ [Smart Feeder](#)
- ▶ [Smart Breeder](#)
- ▶ [Parts Inventory](#)

Common Definitions

General

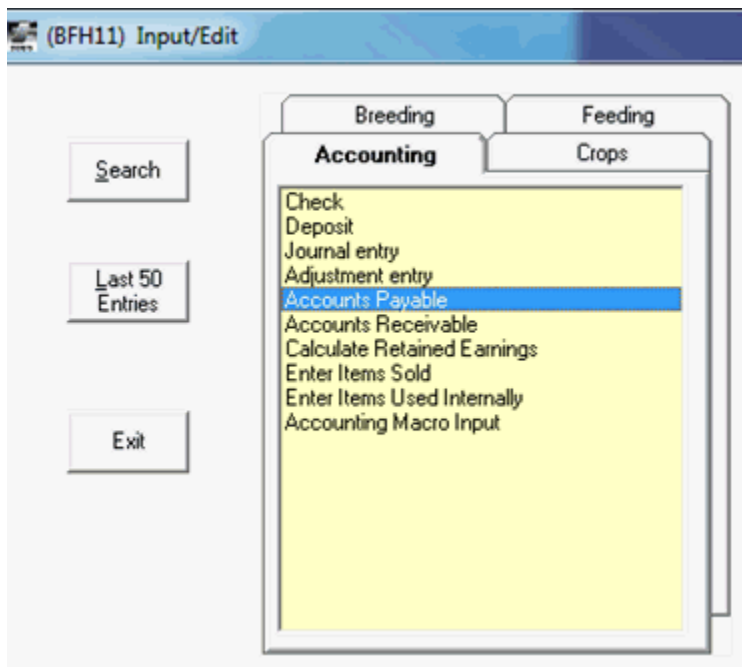
Internet Notifications

- ▶ Added links to Internet notifications on main screen



Menus

- ▶ Added double click to select menu option on new Tab/list box input and report menus



Hot Keys

- ▶ Date Hot Keys added to Hot Key Help

FBS 8.12/10.1 UPDATES

Fbs Function Keys	
26	Input Date:
27	1. +/- to add/subtract one day
28	2. <CTRL> +/- to add/subtract one month
29	3. <SHIFT> +/- to add/subtract one year

Network

- ▶ Increased user limit from 100 to 200

Search

- ▶ Increased general input search limit from 1500 to 3000 entries

Scanner

- ▶ Adjusted delay with Scanner Interface

Centers

- ▶ Can consolidate S Centers (common allocation)

(GSF11) Change Cost/Profit Center

General

Active Center

Number

Description

Type

Inactive date

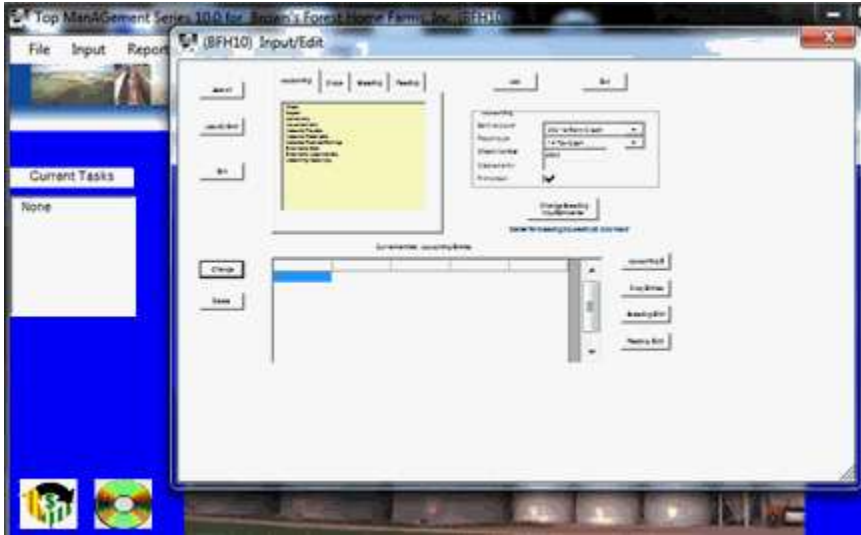
Map to Center

(GSF11) Edit Cost/Profit Centers

Number	Description	Active	Type	Crop Unit
EFCH1F	Cornhead09JD612,F	A	S	EFCH.F
EFCH1V	Cornhead09JD612,V	A	S	EFCH.V
EFCH2F	Cornhead090xbo,F	A	S	EFCH.F
EFCH2V	Cornhead090xbo,V	A	S	EFCH.V

Screens

- ▶ Scalable screens/fonts in Version 10.x



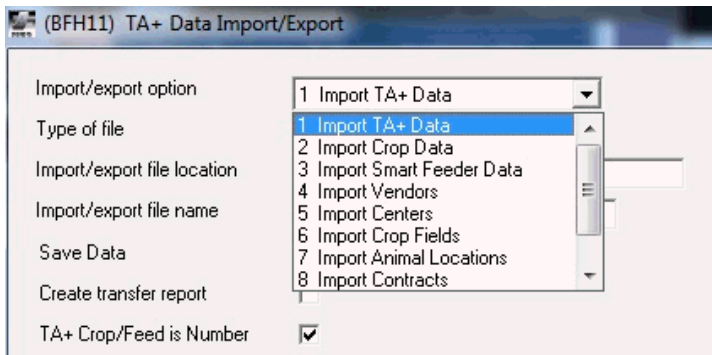
TransAction Plus

Input

- ▶ Added option to import QuickBooks payroll data
- ▶ Increased detail line limit from 200 to 300
 - Input/Edit
 - Payroll integration

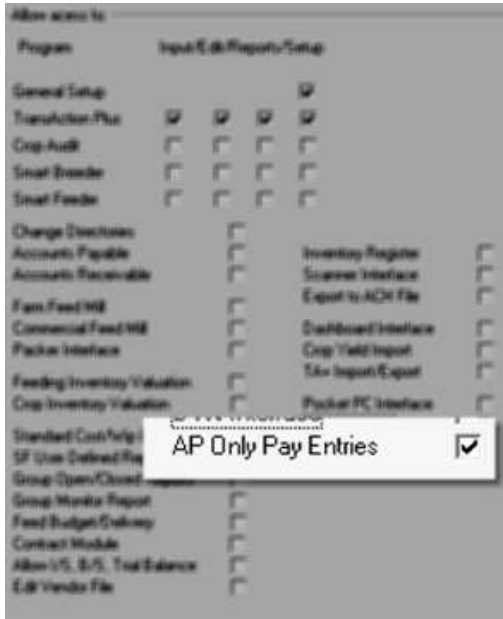
Import/Export

- ▶ Check box to not save data
 - This allows you to see if data fields are set correctly. Since nothing gets mapped, this provides a way to check that data is ok before importing a bunch of stuff that may then have to be corrected. At this time it only applies to TransAction Plus.
- ▶ Added more import sources:



Accounts Payable

- ▶ “Close Month” option now applies to Pay Invoices
- ▶ Added flag to multiuser version to only allow entry of payments to A/P but not access to other options entries
 - (A/P and A/R must be disabled for that user)



Interfaces

- ▶ Changed Inventory Register logic so that line is not saved unless user changes quantity field
- ▶ Activated Triumph Packer Interface

Reports

User Defined Report

- ▶ Added columns for these integration fields:
 - Scanned (hyperlinked to document)
 - Int No 1 (Product/Operation)
 - Int No 2 (Field/Ration)
 - Int No 3 (Application Method/Location)
- ▶ Total of 33 sortable columns

Scanned	Buy/Use	Int No 1	Int No 2	Int No 3
No	Yes	10	4	2
No	Yes	10	40	2
No	Yes	10	1	2
No	Yes	9005	1	

TransAction Summary Reports

- ▶ Includes Income Statement, Balance Sheet, Ledger Summary, Trial Balance, etc.
- ▶ Added option in TA+ Drill Down Recap preference to select by user whether to recap by Center, Ledger account, or by Division when drilling down to detail
 - Besides the C/L/D option, you can now also add options by user.
 - Format is: x, [user1]=x, [user2]=x
 - "x" = C/L/D/N or Center/Ledger/Division/None
 - Brackets are required
 - Capitalization on user name is ignored

TA+ Drill Down Recap

TA+ Filter Detail Accounts

Current Row: 92 of 121

Valid values: C,L Used by: TA+ drill down

Desc: Determines if drill down will recap by Center or Ledger or no recap

(BFH11) Income Statement from Ledger Accounts - Detail for: Repairs - Mach/Equ							
Edit	Number	Date	Vendor	Acct	cen	Div.	Amount
	43869	01/04/2011	FARM PLAN	660	05	0	304.87
	86865	01/05/2011	GOLD STAR FS, INC.	660	T121	2	41.38
	5350	01/06/2011	ALEDO AUTO & FARM SUPPLY	660	05	0	19.10
	5351	01/06/2011	BONEY'S FARM STORE	660	05	0	15.00
	5351	01/06/2011	BONEY'S FARM STORE	660	05	0	34.25
	5351	01/06/2011	BONEY'S FARM STORE	660	05	0	63.47
	5353	01/06/2011	ALEDO WELDING ENTERPRISE	660	05	0	305.69
	5353	01/06/2011	ALEDO WELDING ENTERPRISE	660	T126	0	120.01
	5353	01/06/2011	ALEDO WELDING ENTERPRISE	660	0	0	129.92
	5516	01/11/2011	SUNRISE TRACTOR & TRAILER	660	E0008	2	4,033.17
	45089	01/15/2011	FARM PLAN	660	05	0	11.00
	87130	01/31/2011	GOLD STAR FS, INC.	660	T112	0	869.75
			Unallocated		0		129.92
			SHOP & MAINTENANCE		05		753.38
			2001 FORD PICKUP		T112		869.75
			1990 Ford 9000 Truck		T121		41.38
			06 Toyota Crew Cab		T126		120.01
			JD 893 CORN HEAD		E0008		4,033.17
			TOTALS				5,947.61

Report Generator

- ▶ Date Changed
- ▶ Group/Project ID
- ▶ Group/Project Description

E.CLIPSE Managerial Accounting

- ▶ Setup displays inactive N Centers
- ▶ Moved SFIV standard costs to field operations column on Project Report (from other costs)

LifeCycle™ Budget

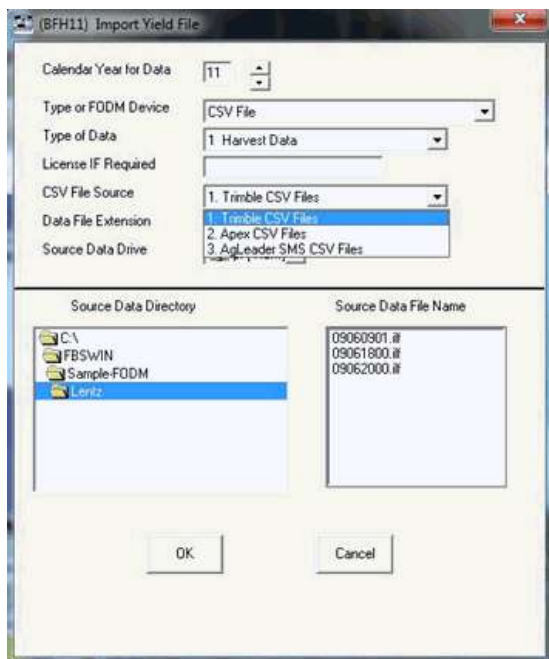
Planning

- See [Smart Feeder](#) Section

Crop Audit Plus –

MACH 2.0 Precision Farming Interface

- ▶ Imports CVS files from these sources:
 - Trimble
 - John Deere APEX™
 - Ag Leader SMS™



Input

- ▶ Increased input purchase records (for application valuation) to 4500

Reports

Project Report

- ▶ Uses CAIV standard costs for operations
- ▶ Flags projects that aren't in setup (or open prior to report data range)

Project	Center	Field	Crop Year	Project Acres	Field Acres
Project for: 101-1 (101_1	101	1	2010	0.00	126.52
Project for: 101-4 (101_4	101	4	2010	0.00	8.91
Project for: 101-8 (101_8	101	8	2010	0.00	34.90
Project for: 101-9 (101_9	101	9	2010	0.00	40.80
Project for: 101-10 (101_1	101	10	2010	0.00	118.50
Project for: 101-11 (101_1	101	11	2010	0.00	191.30
Project for: 101-12 (101_1	101	12	2010	0.00	71.40
Project for: 101-13 (101_1	101	13	2010	0.00	164.00
Project for: 101-14 (101_1	101	14	2010	0.00	150.00
Project for: 101-15 (101_1	101	15	2010	0.00	24.00
Project for: 101-42 (101_4	101	42	2010	0.00	8.10
10 Corn/ Dunn	101	6	2010	13.90	13.90
Totals	101		2010	13.90	952.33
Grand Totals				13.90	952.33

Smart Feeder

Commercial Feed Mill

- ▶ Added contracts to Agvantage Commercial Feed Mill format (use PO column)

Reports

User Defined Report

- ▶ Can combine (nursery-finishing) stages for:
 - All feed detail
 - Mortality
 - Animal days / ADG
- ▶ Up to 20 Sales Groups
 - Time range controlled by Preference
- ▶ Added Stage to Stage of Growth Description
- ▶ Increase Report Limit to 40

Smart Feeder Feed Budget

- ▶ Can combine nursery-finishing stages
- ▶ Added Feeding Stage of Growth

Smart Feeder Input History

- ▶ Can combine nursery-finishing stages
- ▶ Prorated/fractional death loss
- ▶ Creates "null" death loss records by week
- ▶ Added Feeding Stage of Growth
- ▶ These are primarily used to export to Dashboard

Smart Feeder Planning / LCB

- ▶ Increased Planning Rations from 12 to 20
 - ▶ Added option to include DTN prices for budget column feed on Feeding Cost Analysis report
 - ▶ Added LCB Scenarios to Feeding Period Summary Report
-

Smart Breeder

Input

- ▶ Input by Sow
 - Changed 'Foster Litter' option to match main input screen
 - Lists baby pig deaths by date (if option set in Setup |Breeding | General)
- ▶ Pig Death Input
 - Added Hot Key (F12) to go to edit baby pig deaths through Edit Litter screen
- ▶ Added routine to load sows for selected group for 30/50/90 day Preg Check by Group
- ▶ Increased mating sow limit from 500 to 1000
- ▶ "New" PigWIN data conversion

Reports

User-Defined Sow Card

- ▶ Added times bred
- ▶ Sow date added in 1000-day format

Parts Inventory Module

New Program to Inventory Parts

- ▶ Creates A/P and A/R entries in orders
- ▶ Check-in parts
- ▶ Warranty tracking
- ▶ Reorder points
- ▶ Print labels / bar codes/scan to relieve
- ▶ Markup variables
 - Base markup
 - By customer/product
- ▶ Full P.O. System